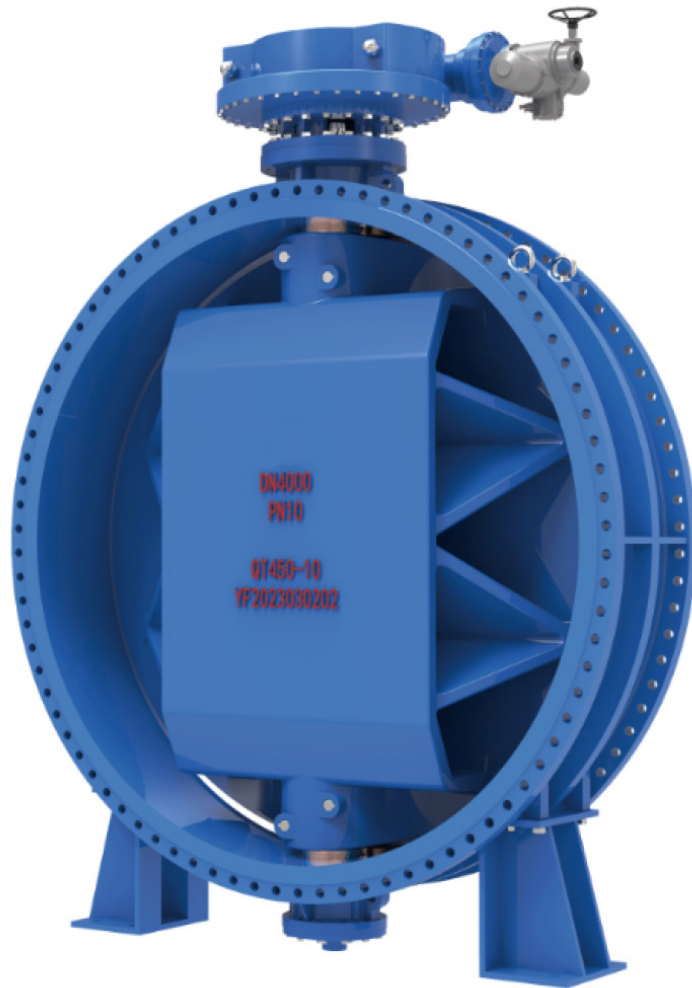


KUMO

VALVES



Double Eccentric Soft Seal Butterfly Valve

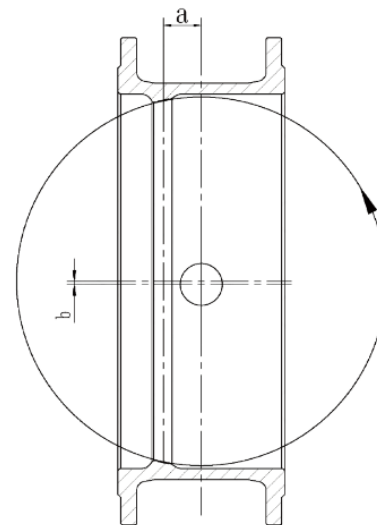
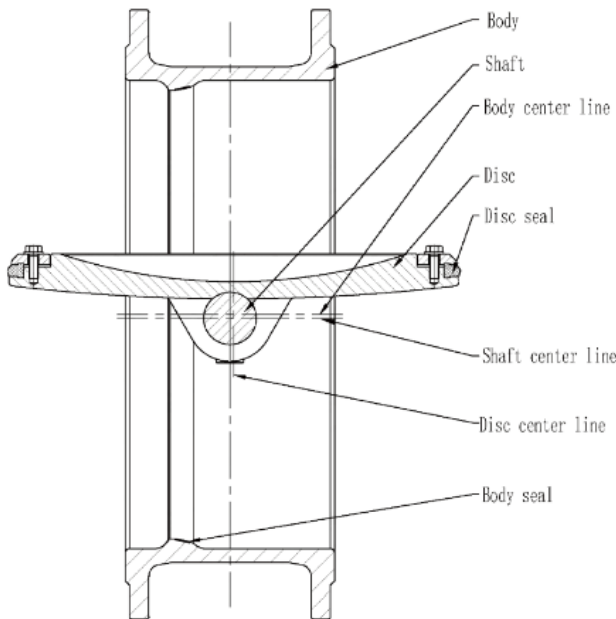
KUMO
WATER



Professional Manufacturer Of Water Pipe Valves And Industrial Valves

● **Product Introduction** Double eccentric soft seal butterfly valve is a shut-off bidirectional valve with a double offset of the disc. It has good fluid control characteristics and closing sealing performance, and is widely used in food, medicine, chemical, petroleum, electric power, textile, paper and other industries.

● **Working Principle** The eccentric principle is that the stem shaft is both deviated from the valve body center (a), also deviated from the seat (b). The double eccentricity effect allows the butterfly plate to quickly detach from the valve seat when the valve is opened, Greatly eliminates unnecessary excessive squeezing and scraping between the butterfly plate and the valve seat, reduces the valve opening torque, reduces valve seat wear, and improves the service life of the valve seat.



Field of application

Size	DN100~DN4000 4inch~160inch						
Nominal Pressure	PN6	PN10	PN16	PN25	PN40	Class 150	Class 300
Shell Test (Mpa)	0.9	1.5	2.4	3.75	6.0	3.0	7.5
Sealing test (Mpa)	0.66	1.1	1.76	2.75	4.4	2.2	5.5
Medium	Water, Sea water, Sewage, Oil, etc.						
Temperature	-29°C ~ 80°C						
Connection type	Flange type, Welding type, Wafer type						
Drive mode	Gear box, Pneumatic, Hydraulic, Electric, etc						



Soft seal butterfly valve - Sealing ring on the disc

Product characteristics and benefits

- 1.- 100% Sealed, Zero Leakage: Self-adjusting elastomer seat ensures complete sealing without any leaks.
- 2.- Bi-directional Flow Sealing: Effectively seals in both directions with a pressure coefficient of 1.1 x PN.
- 3.- High-Quality Rubber Disc Seat: Maintains its original shape and provides reliable sealing.
- 4.- Secure Fastening: Adjusting retaining ring fastened with A2-70 screws and dowel pins.
- 5.- Durable Body Seat: Automatic surfacing with stainless steel for long-lasting performance.
- 6.- Self-Lubricating Shaft Sleeve: Reduces operating torque for smoother operation.
- 7.- Easy Maintenance and Handling: Designed for convenient maintenance and user-friendly handling.
- 8.- Streamlined Disc Design: Reduces flow resistance, enhances stability, and minimizes pressure loss.
- 8-1.- Truss Type Disc Design: Offers higher strength for high-pressure and large diameter applications.



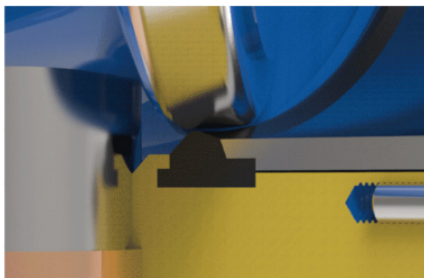


Soft seal butterfly valve - Sealing ring on the body

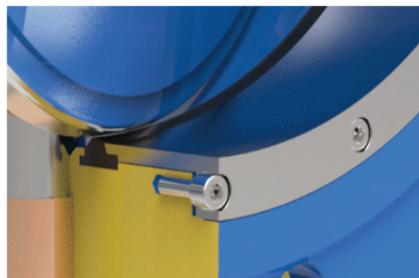
Building upon the disc seal butterfly valve, we present the body seal structure butterfly valve. In this design, the sealing ring is fixed directly on the valve body. This innovative structure offers excellent fluid control capabilities and ensures reliable sealing upon closure.

Product characteristics and benefits

- 1.- Automatic adjusting elastomer seat securely fixed to the body.
- 2.- 100% bidirectional seal with zero leakage.
- 3.- Adjusting retaining ring fixed to the valve body flange using A2-70 screws, keeping them isolated from the medium.
- 4.- Features superior sealing and low operating torque of the disc seal butterfly valve.



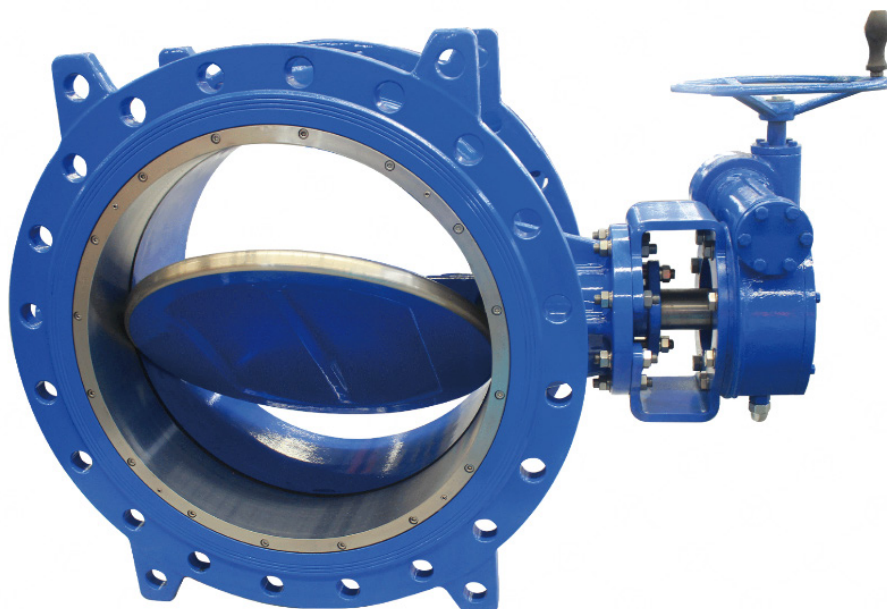
The elastic seal ring is fixed to the valve body.



The adjusting retaining ring is fixed to the body using stainless steel screws.



Valve disc sealing surface surfacing stainless steel.





Soft seal butterfly valve-Rubber lined butterfly valve

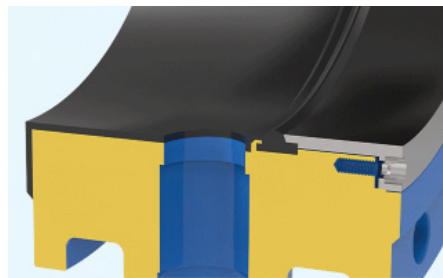
To handle severe corrosive liquids and gases such as sulfuric acid, hydrofluoric acid, phosphoric acid, chlorine, strong alkali, aqua regia, and more, our valve offers specialized adaptations. The valve body can be lined with rubber, while the valve plate and shaft can be replaced with stainless steel. This configuration ensures compatibility and meets the demanding requirements for transporting corrosive media effectively.

Product characteristics and benefits

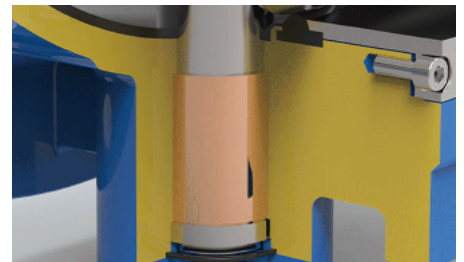
- 1.- The inner cavity of the valve body is lined with glue to ensure that the medium is isolated from the metal valve body and improve the reliability of the product
- 2.- Lining material can be selected according to different media
- 3.- Adjusting retaining ring, valve disc, valve shaft and other internal parts can be selected according to different media
- 4.- The selection of non-toxic, antibacterial, aging-resistant, corrosion-resistant rubber material, long service life
- 5.- Bidirectional seal, zero leakage



Use self-lubricating bearings to reduce operating torque



The sealing ring is fixed to the valve body by a stainless steel retaining ring.



The valve body is lined with rubber to prevent contact with the medium.

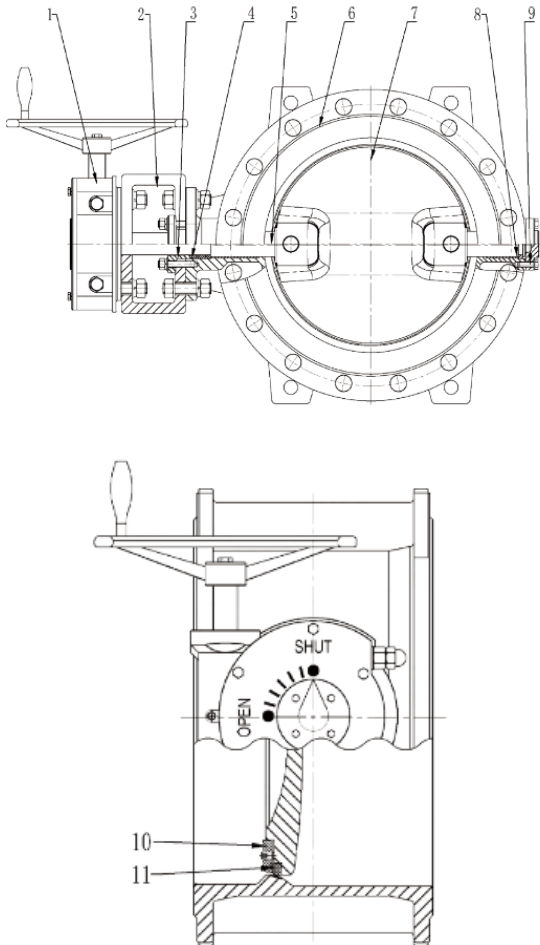


Standards

Standards	Standard Code			
	GB, JB, HG VALVE	API, AWWA VALVE	DIN VALVE	EN VALVE
Design	JB/T8527 GB/T 12238	API 609 AWWA C504	DIN3354	EN 593
Face to face	GB/T 12221	API609, ASME B16.1 AWWA C504, AWWA C516	DIN3202	EN 558
Flanges	GB/T 1724.6, GB/T9113, GB/T 9124, HG/T 20592	ASME B16.5, B16.47 ASME B16.1 AWWA C207	DIN 2543- DIN2545	EN 1092
Test	GB/T 13927	API 598 API 6D	DIN3230	EN 12266

Material of the parts

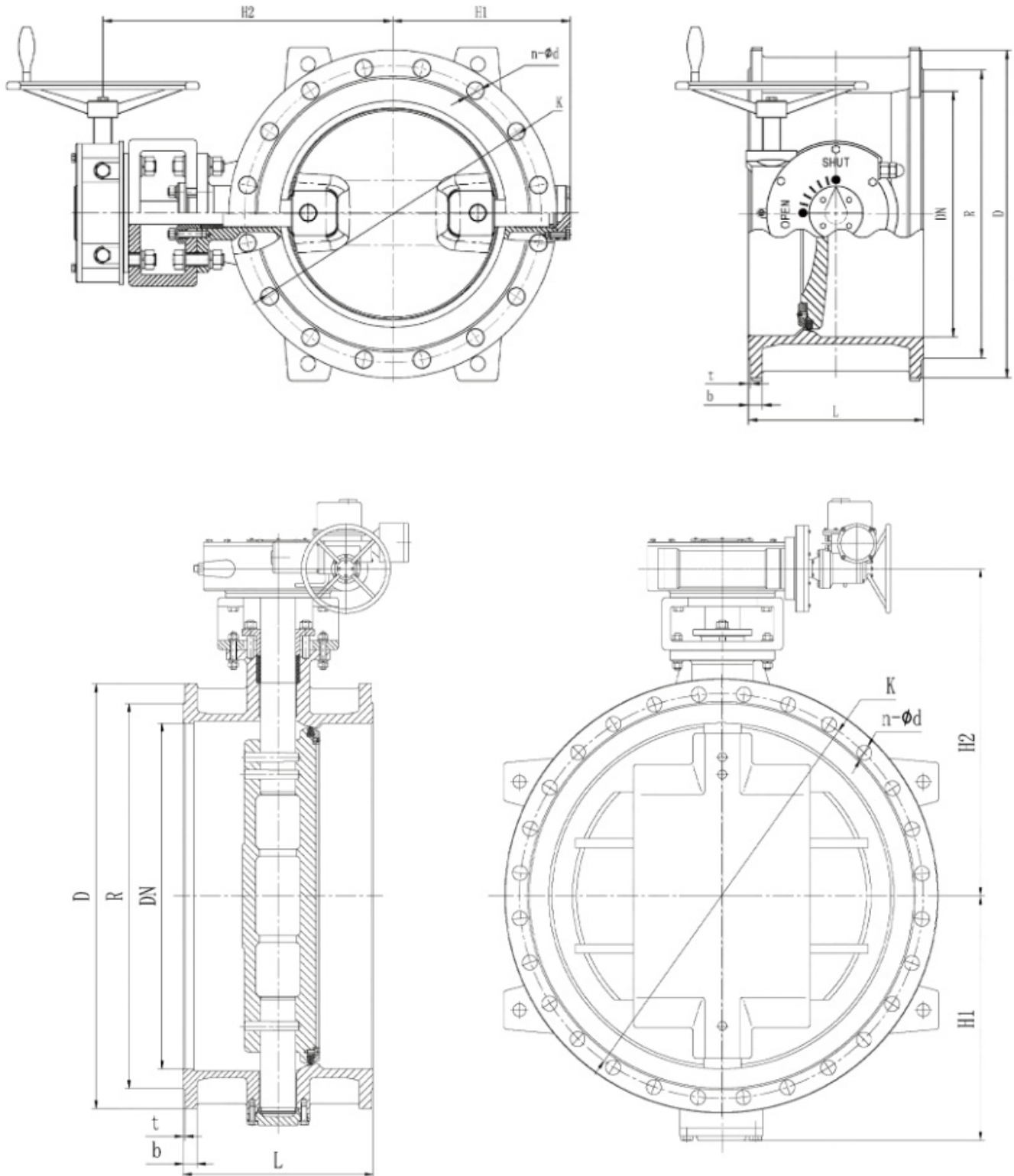
Soft seal butterfly valve - Sealing ring on the disc



No	Component	Material
1	Gearbox	Assembly set
2	Neck flange	Carbon steel
3	Packing plate	Carbon steel, Stainless steel
4	Packing	PTFE, Graphite
5	Shaft	Austenitic stainless steel, Martensitic stainless steel, Duplex steel, Super Duplex Steel
6	Body	Ductile Iron, Carbon steel, Stainless steel, Duplex steel, Super Duplex Steel.
7	Disc	Ductile Iron, Carbon steel, Stainless steel, Duplex steel, Super Duplex Steel
8	Bearing	Tin bronze, Aluminum bronze, Stainless steel
9	End cover	Ductile Iron, Stainless steel
10	Disc seat ring	NBR, EPDM, PTFE
11	Retainer ring	Carbon steel, Stainless steel



Draw





Size		Outline dimensions				Flange dimensions EN1092-2 1997											
DN		L		H1	H2	PN6				PN10				PN16			
Inch	mm	Series 13	Series 14			D	K	b	n-φd	D	K	b	n-φd	D	K	b	n-φd
2	50	108	150	83	223	140	110	16	4-φ14	165	125	19	4-φ19	165	125	19	4-φ19
2 1/2	65	112	170	93	228	160	130	16	4-φ14	185	145	19	4-φ19	185	145	19	4-φ19
3	80	114	180	100	246	190	150	18	4-φ19	200	160	19	8-φ19	200	160	19	8-φ19
4	100	127	190	110	277	210	170	18	4-φ19	220	180	19	8-φ19	220	180	19	8-φ19
5	125	140	200	125	286	240	200	20	8-φ19	250	210	19	8-φ19	250	210	19	8-φ19
6	150	140	210	143	304	265	225	20	8-φ19	285	240	19	8-φ23	285	240	19	8-φ23
8	200	152	230	170	437	320	280	22	8-φ19	340	295	20	8-φ23	340	295	20	8-φ23
10	250	165	250	193	495	375	335	24	12-φ19	395	350	22	12-φ23	405	355	22	12-φ23
12	300	178	270	233	519	440	395	24	12-φ23	445	400	24.5	12-φ23	460	410	24.5	12-φ23
14	350	190	290	253	544	490	445	26	12-φ23	505	460	24.5	16-φ23	520	470	26.5	16-φ23
16	400	216	310	283	647	540	495	28	16-φ23	565	515	24.5	16-φ28	580	525	28	16-φ28
18	450	222	330	308	667	595	550	28	16-φ23	615	565	25.5	20-φ28	640	585	30	20-φ28
20	500	229	350	335	730	645	600	30	20-φ23	670	620	26.5	20-φ28	715	650	31.5	20-φ28
24	600	267	390	390	835	755	705	30	20-φ28	780	725	30	20-φ31	840	770	36	20-φ31
28	700	292	430	448	895	860	810	32	24-φ28	895	840	32.5	24-φ31	910	840	39.5	24-φ31
32	800	318	470	508	955	975	920	34	24-φ31	1015	950	35	24-φ34	1025	950	43	24-φ34
36	900	330	510	558	1058	1075	1020	36	24-φ31	1115	1050	37.5	28-φ34	1125	1050	46.5	28-φ34
40	1000	410	550	615	1096	1115	1120	36	28-φ31	1230	1160	40	28-φ37	1255	1170	50	28-φ37
48	1200	470	630	728	1243	1405	1340	40	32-φ34	1455	1380	45	32-φ41	1485	1390	57	32-φ41
56	1400	530	710	838	1380	1630	1560	44	36-φ37	1675	1590	46	36-φ44	1685	1590	60	36-φ44
64	1600	600	790	958	1620	1830	1760	48	40-φ37	1915	1820	49	40-φ50	1930	1820	65	40-φ50
72	1800	670	870	1058	1631	2045	1970	52	44-φ41	2115	2020	52	44-φ50	2130	2020	70	44-φ50
80	2000	760	950	1163	1859	2265	2180	56	48-φ44	2325	2230	55	48-φ50	2345	2230	75	48-φ50
88	2200	800	1000	1385	1920	2475	2390	60	52-φ44	2550	2440	58	52-φ57	2555	2440	75	52-φ57
96	2400	850	1100	1500	2200	2685	2600	64	56-φ44	2760	2650	68	56-φ57	2765	2650	75	56-φ57
104	2600	900	1200	1600	2300	2905	2810	68	60-φ50	2960	2850	70	60-φ57	2965	2850	80	60-φ57
112	2800	950	1300	1750	2450	3115	3020	72	64-φ50	3185	3070	78	64-φ62	3190	3070	90	64-φ62
120	3000	1000	1400	1900	2600	3215	3220	76	68-φ50	3405	3290	82	68-φ62	3410	3290	100	68-φ62
128	3200	1100		2050	2750	3525	3430	80	72-φ50	3610	3500	88	72-φ62	3620	3500	110	72-φ62
136	3400	1200		2200	2900	3735	3640	84	76-φ50	3840	3720	96	76-φ62	3850	3720	120	76-φ62
144	3600	1200		2300	3000	3970	3860	88	80-φ57	4070	3950	100	80-φ62	4080	3950	120	80-φ62
152	3800	1200		2400	3100	4170	4060	92	80-φ57	4270	4150	100	80-φ62	4280	4150	120	80-φ62
160	4000	1300		2500	3200	4370	4260	96	80-φ57	4470	4350	100	84-φ62	4480	4350	120	84-φ62

Encuentra a tu distribuidor en:

www.kumovalves.com

Escribenos:

info@kumovalves.com

